

# E920



EXPANDABLE



QUICK START



HIGH  
PRECISION



YEARS  
WARRANTY

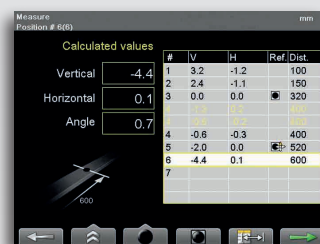
## HIGH PRECISION GEOMETRIC MEASUREMENT AND ALIGNMENT

This system can be used to carry out all the most common geometric measurements; straightness, flatness, squareness, plumb and level. Measurement is quick and precise. Displayed resolution is 0.001 mm [0.05 mils]. The system can provide full documentation, with direct generation of PDF reports, and database programs for PC. The laser transmitter is our well known big seller, the D22 with levelling table, strong magnetic feet, and a range of up to 40 m. The transmitter's laser beam can be compared to an absolutely straight and weightless ruler, that is to say a perfect starting point for precision measurement.

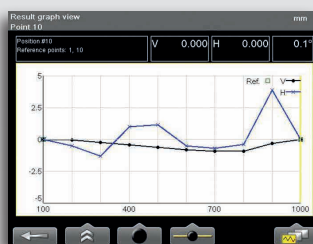


## STRAIGHTNESS MEASUREMENT

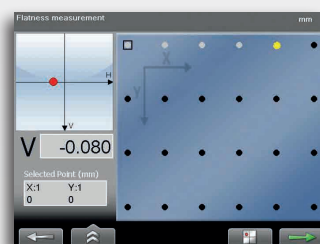
With our program for measuring straightness, you can easily measure long shafts, rolls, bearings, bases, machine structures etc. All you have to do is define a number of measuring points, in advance or while measuring. You will be able to get the result for both the horizontal and vertical alignment, graphically as well as digitally.



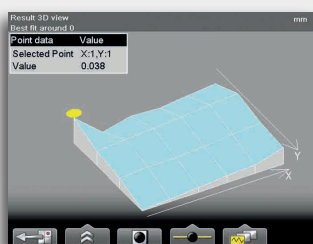
Straightness program. Measuring.



Straightness program. Result graph.



Flatness program. Measuring.



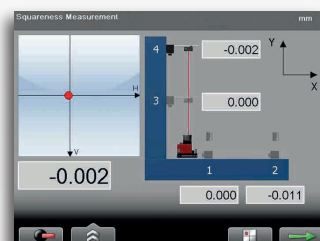
Flatness program. Result graph.

## FLATNESS MEASUREMENT

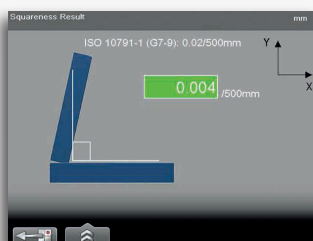
Flatness can be measured on a rectangular or circular plane. The user can select a method according to the type of measurement required. Position the detector at selected measurement points and record the values. After measuring, set three of the measurement points as references (0), then the remaining points are recalculated to the new reference plane formed.

## SQUARENESS MEASUREMENT

When measuring squareness, first record two measurement values on a single object to create a reference for the angle. Then use the built-in angular prism in laser transmitter D22, which deflects the laser beam 90°, and record two new measurement values on the second object.



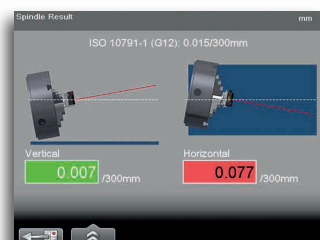
Squareness program. Measuring.



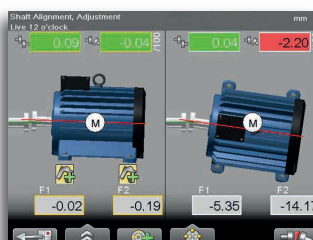
Squareness program. Result.

## ALL PROGRAMS ARE INCLUDED

Easy-Laser® E920 is a complete system in itself, with laser transmitter, detector and display unit. But it is also an excellent starting point for creating a measurement system that suits your specific needs and requirements, because all the measurement programs are included as standard! Add extra laser transmitters, measuring units and brackets as well as other accessories from the wide Easy-Laser® range. Now or in the future.



Spindle program. Result.

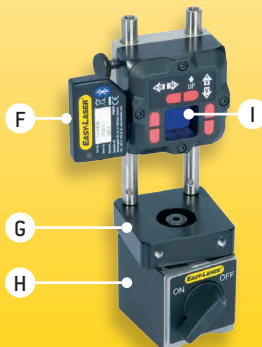
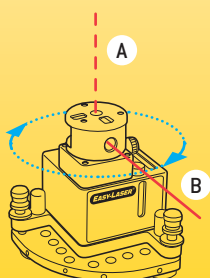


Shaft alignment program.  
Note! Accessories required.

## GEOMETRIC MEASUREMENTS

For measurement of straightness, flatness, squareness etc.

# EASY-LASER®



### Laser transmitter

- A. The laser beam is angled at 90° to the sweep
- B. The laser beam is used for a 360° sweep
- C. Levelling screws (x2)
- D. Magnetic feet (x3)
- E. Swivelling head

### Detector

- F. Bluetooth® unit
- G. Rotatable head
- H. Magnet base
- I. PSD (2 axis)

# TECHNICAL DATA

## System

Relative humidity	10–95%
Weight (complete system)	12.3 kg [27.1 lbs]
Carrying case	WxHxD: 550x450x210 mm [21.6x17.7x8.3"]
	Drop tested. Water and dust tight.

## Laser transmitter D22

Type of laser	Diode laser
Laser wavelength	635–670 nm, visible red light
Laser Safety Class	Class 2
Output	< 1 mW
Beam diameter	6 mm [1/4"] at aperture
Working area, range	40-metre radius [130']
Type of battery	1 x R14 (C)
Operating time/battery	approx. 24 hours
Operating temperature	0–50 °C
Levelling range	± 30 mm/m [± 1.7"]
3 x spirit vials' scaling	0.02 mm/m
Squareness between laser beams	0.01 mm/m [2 arc sec.]
Flatness of sweep	0.02 mm
Fine turning	0.1 mm/m [20 arc sec.]
2 x spirit vials for rotation	5 mm/m
Housing material	Aluminium
Dimensions	WxHxD: 139x169x139 mm [5.47x6.64x5.47"]
Weight	2650 g [5.8 lbs]

## Detector E7

Type of detector	2 axis PSD 20x20 mm [0.78" sq]
Resolution	0.001 mm [0.05 mils]
Measurement error	± 1% +1 digit
Inclinometers	0.1° resolution
Thermal sensors	± 1° C accuracy
Environmental protection	IP Class 66 and 67
Operating temperature	-10–50 °C
Internal battery	Li Po
Housing material	Anodized aluminium
Dimensions	WxHxD: 60x60x42 mm [2.36x2.36x1.65"]
Weight	186 g [6.6 oz]

## Display unit E51

Measuring programs	Complete set
Type of display/size	VGA 5.7" colour
Displayed resolution	0.001 mm / 0.05 thou
Power management	Endurio™ system for unbroken power supply
Internal battery (stationary)	Li Ion
Battery compartment	For 4 pcs R 14 (C)
Operating time	Appr. 30 hours (Normal operating cycle)
Operating temperature	-10–50 °C
Connections	USB A, USB B, External, Easy-Laser® units, Network
Wireless communication	Class I Bluetooth® Wireless Technology
Storage memory	>100,000 measurements
Help functions	Calculator, Unit converter, Instruction films
Environmental protection	IP Class 65
Housing material	PC/ABS + TPE
Dimensions	WxHxD: 250x175x63 [9.8x6.9x2.5"]
Weight (without batteries)	1030 g [2.3 lbs]

## Wireless connection unit

Wireless communication	Class I Bluetooth® Wireless Technology
Operating temperature	-10–50 °C
Environmental protection	IP Class 66 and 67
Housing material	ABS
Dimensions	53x32x24 mm [2.1x1.2x0.9"]
Weight	25 g [0.9 oz]

## Cables

Type	With Push/Pull connectors
System cable	Length 2 m [78.7"]
Extension system cable	Length 5 m [196.8"]
USB cable	Length 1.8 m [70.8"]

## Magnet base with turnable head (for detector)

Holding power	800 N
---------------	-------

## Rods for detector

Length	60 mm / 120 mm (extendable) [2.36"/4.72"]
--------	---

## EasyLink™ data base software for PC

System requirements	Windows® XP, Vista, 7, 8. For the export functions, Excel 2003 or newer must be installed on the PC.
---------------------	--



## A complete system contains

- 1 Laser transmitter D22
- 1 Detector E7
- 1 Display unit E51
- 1 Bluetooth unit
- 1 Cable 2 m
- 1 Cable 5 m (extension)
- 1 Cable support
- 1 Machine spindle pin
- 1 Safety strap for laser transmitter
- 2 Targets for rough alignment
- 1 Magnet base with turnable head
- 1 Offset bracket
- 1 Set of rods (6x60 mm, 6x120 mm)
- 1 Manual
- 1 Measuring tape 5 m
- 1 USB memory stick (with EasyLink™ program)
- 1 USB cable
- 1 Battery charger (100–240 V AC)
- 1 Toolbox
- 1 Cleaning cloth for optics
- 1 Carrying case

System Easy-Laser® E920 Geometric, Part No. 12-0771

Easy-Laser® is manufactured by Damalini AB, Alfagatan 6, 431 49 Mölndal, Sweden,  
Phone +46 31 708 63 00, Fax +46 31 708 63 50, email: info@damalini.se, www.damalini.com  
© 2014 Damalini AB. We reserve the right to make modifications without prior notification.  
Easy-Laser® is a registered trademark of Damalini AB.  
This product complies with: EN60825, 21 CFR 1040.10 and 1040.11  
This device contains FCC ID: PVH0925, IC: 5325A-0925.  
Extend the warranty from 2 to 3 years by registering your system on the Internet.



05-0683 Rev2



ISO9001  
CERTIFIED



Авторизованный дилер на территории Республики Беларусь

**ИП Авдонин А.В.**

T/ф +37517-220-83-91, Моб.+37529-378-25-01, +37529-708-01-91

www.vibrohelp.by, e-mail: vibrohelp@tut.by